



Exercise for *Database System Concepts for Non-Computer Scientist* im
WiSe 18/19

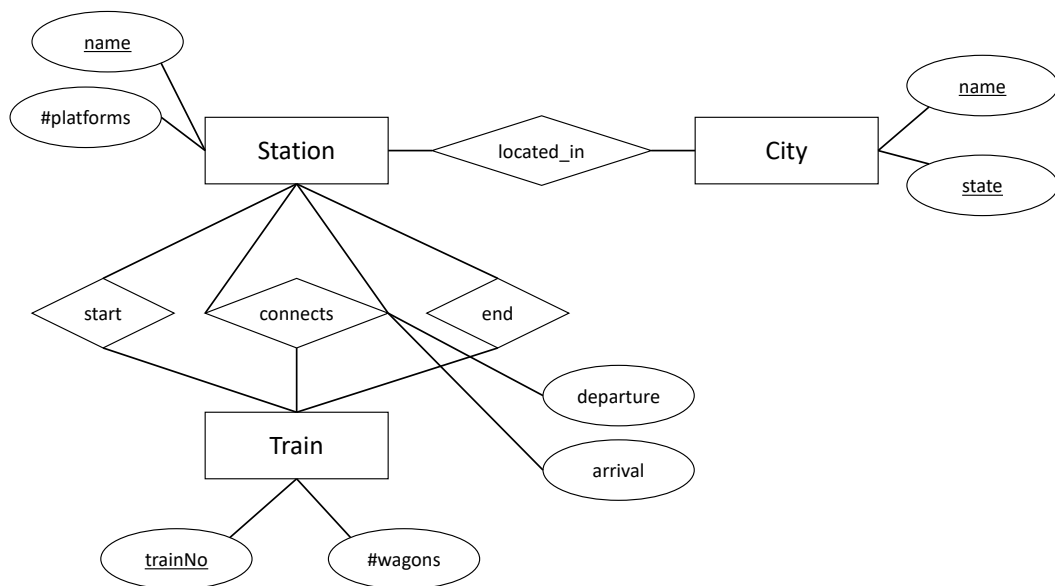
Alexander van Renen (renen@in.tum.de)
<http://db.in.tum.de/teaching/ws1819/DBSandere/?lang=en>

Sheet 04

Exercise 1

Consider the entity relationship model of a train connection system (below). Note: **connects** models a the direct connection between two stations. For example, the train starting in Munich and ending in Hamburg passes through several stations. Each of these route-sections (e.g., Munich → Nürnberg or Nürnberg → Würzburg) has an entry in the **connects** relation.

- Add functionalities to the ER diagram.
- Transform the ER diagram into a relational schema.
- Refine the relational schema as far as possible by eliminating relations.



Exercise 2

Now, if you want more practice, consider the hospital example, again. This time take the entity relationship diagram and transform it into a relational schema. Then, optimize it by eliminating relations.

